



Orifice plates

Orifice plates explained

Ultrapharma offers a very wide range of Orifice Plates, used to alter flow patterns and to create pressure drops, in critical systems. Orifice plates are made in 316L stainless steel and are standard electro polished. Standard plates are delivered without hole. We offer custom machined holes either eccentric (self-draining) or concentric.

A relatively new innovation are the conical plates used in vertical pipelines, so they become self-draining. A flat plate in a vertical pipeline is not self-draining, a conical plate pointing down is a self-draining solution.

Orifice plates can be molded with bonded gaskets as a fixed set. They can also be installed with a removable elastomeric slit-gasket. This means that the gasket can be replaced when it is damaged, and the plate can be reused. Slit-gaskets can be made in EPDM (CMD-1004), Platinum Silicone (CMD-1012) and FKM (CMD-1010).



Conical Orifice plates, for vertical pipelines

DIN11851 Removable Steam-Flon®



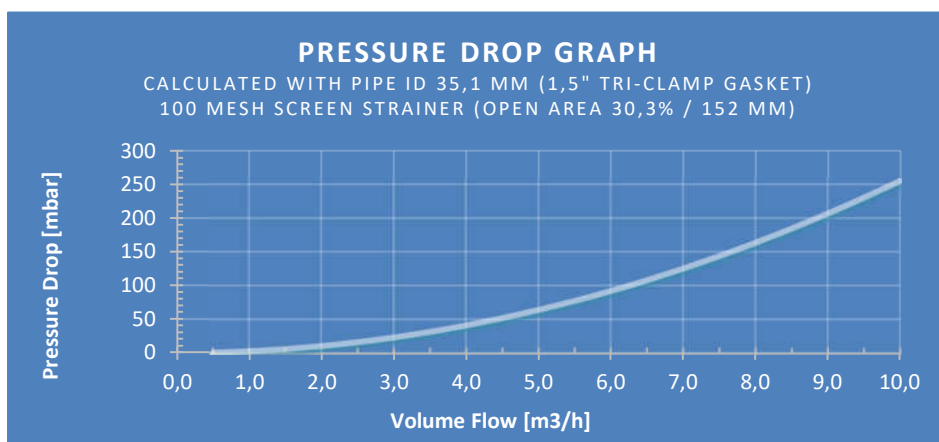
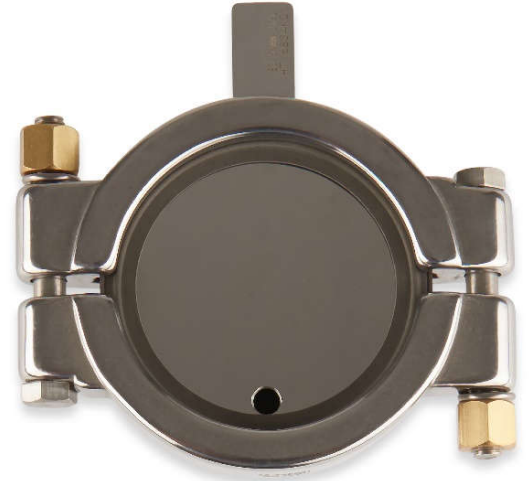
PTFE with 316L plate



Tabbed Orifice plates

To stand-out and to be identified in the system we can offer orifice plates with a tab. The tab has the heat number permanently laser engraved. The tabbed orifice plates are always mounted with a removable gasket either in one of the standard elastomers or with our unique Removable Steam-flon® (PTFE/316SS) gasket.

For removable Steam-Flon gaskets we recommend to use MHP clamps (13MHP), these are also available with a slit for tabbed orifice plates. Follow the torque recommendations for a solid connection.



Available sealing materials

Available Elastomer Compounds: EPDM (CMD-1004)
Platinum Silicone (CMD-1012)
FKM (CMD-1010)

PTFE (plastic) Compounds: Virgin PTFE (CMD-1018)
Steam-Flon® (CMD-1019)

Meets: USP Class VI-121°C (CMD-1012 also EP 3.1.9)

Meets: EC 10/2011 (EC1935/2004)

Meets: FDA 177.2600 + FDA 177.1550 (PTFE)

Certified TSE/BSE (ADIF) free (EME/410/01)

All standard Orifice Plates are made with 316L plates.

Our standard is electropolished on all plates

Available sizes

Available standards: DIN32676 Reihe A, B and C, ASME BPE, ISO1127, ISO2852 and SMS3017

Orifice Plates are available in MINI (Ø25 mm flange) series to 6" (Ø167 mm)

In DIN32676 series 1, 2 and 3, respectfully DIN32676, ISO1127 and ASME BPE

Tabbed Orifice plates are available from MINI (Ø25 mm flange) up to 6", with removable elastomeric gaskets or with our removable Steam-Flon® system.



DIN11851 eccentric Orifice plate



DIN 11851 Orifice plate in Steam-Flon®



We are developing the DIN11864 & DIN11853 Orifice Plates as well.

Orifice plates

Distributed by:



info@ultrapharma.com
The Netherlands

www.ultrapharma.com
T. +31 85 6200 900