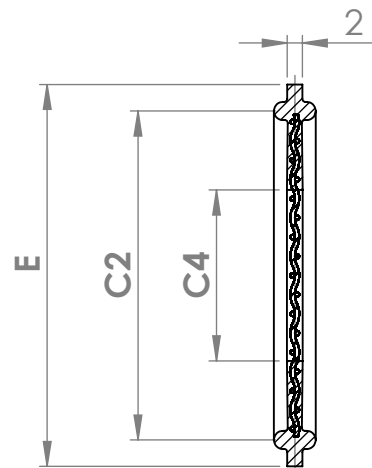
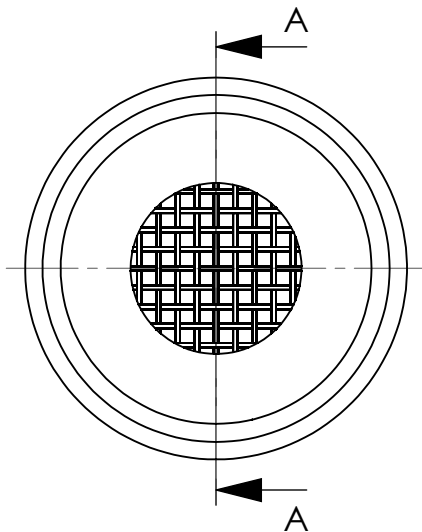
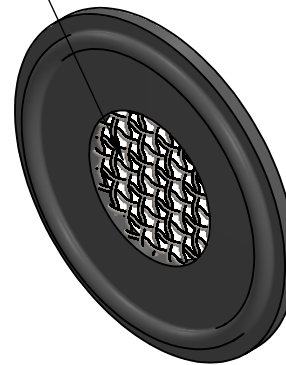


Design Table for: 0205A0001-0

ASME BPE	E	C4	C2	S
1"	50,5	22,6	43,5	42,5
1½"	50,5	35,4	43,5	48,0
2"	63,0	47,5	56,5	59,0
2½"	77,0	61,0	70,5	72,0
3"	90,0	73,0	83,5	86,0
4"	118,0	98,0	110,0	110,0
6"	167,0	147,2	156,5	155,0

Tolerance Rubber Class M2	ISO 3302-1 Fixed	ISO 3302-1 Closure
0 up to 4	± 0.10	± 0.15
4 up to 6,3	± 0.15	± 0.20
6,3 up to 10	± 0.20	± 0.20
10 up to 16	± 0.20	± 0.25
16 up to 25	± 0.25	± 0.35
25 up to 40	± 0.35	± 0.40
40 up to 63	± 0.40	± 0.50
63 up to 100	± 0.50	± 0.70
100 up to 160	± 0.70	± 0.80
160 above	0.5 %	0.7 %

SCREEN AISI 316



SECTION A-A

UP Ultrapharma

info@ultrapharma.com
www.ultrapharma.com

1967 DB Heemskerk
The Netherlands

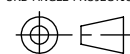
T: +31-(0)251-207050
F: +31-(0)251-207055

CONFIGURATION
see table

DESCRIPTION:
ASME-BPE ELASTO SCREEN

The information contained in this drawing is the sole property of Ultrapharma BV. Any reproduction in part or as a whole without written permission of Ultrapharma BV is prohibited.

3RD ANGLE PROJECTION



UNITS:
mm

SCALE:
1:1

SHEET SIZE
A4